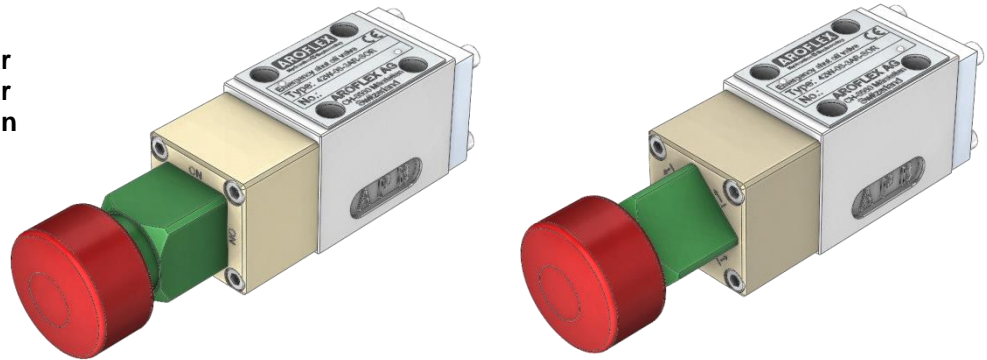


- manually operated
- $p_{max}$  on P, A and B = 350 bar
- $p_{max}$  on T = 100 bar
- Q = 60 l/min



## Description

It's a standard 4/2 way spool valve, but with a clever manually emergency shut off and safety restart function.

The valve will switch in safety position by a strong hit on the red knob. The spool is mechanically locked in the safety position, as well when the red knob is pulled back.

Only with turning the green sleeve 45° counter clockwise the valve switches on again.

The shut off mechanic is protected for use in sea-water atmosphere, the valve body is painted. Therefore it is an all-purpose valve.

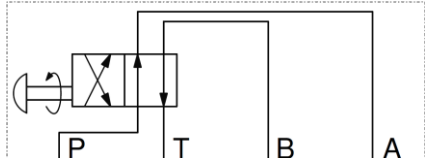
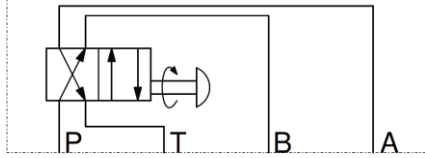
**Important:** Make sure that the green sleeve never can be blocked by dirt or mechanical parts.

## Technical Data

<b>General Specifications</b>	<b>42W-06-...-SOR-...</b>
Description:	4/2 way spool valve, manually operated
Actuator:	Push-button, restart sleeve
Mounting position:	any
Ambient temperature:	- 20° ... + 50°C
Nominal size:	NG6, DIN 24340 A 06, ISO 4401-03, Cetop 3
Weight:	1.8 kg

<b>Hydraulic Specifications</b>	
Nominal flowrate:	Q = 60 l/min
Max. pressure on P, A and B:	$p_{max} = 350$ bar
Max. pressure on T:	$p_{max} = 100$ bar
Fluid:	Mineral oil, other fluids on request
Fluid temperature:	- 20° ... + 70°C
Viscosity range:	12 - 320 mm <sup>2</sup> /s (cSt)
Filtration:	25 µm minimum
Internal leakage:	see characteristics

## Overview

Symbols	Description	Design
	42W-06-3AR-SOR	4/2 - way valve, detent knob on A-side normal position: P – A, B – T safety position: P – B, A – T
	42W-06-3BR-SOR	4/2 - way valve, detent knob on B-side normal position: P – B, A – T safety position: P – A, B – T

➔ other types on request

**Type code**

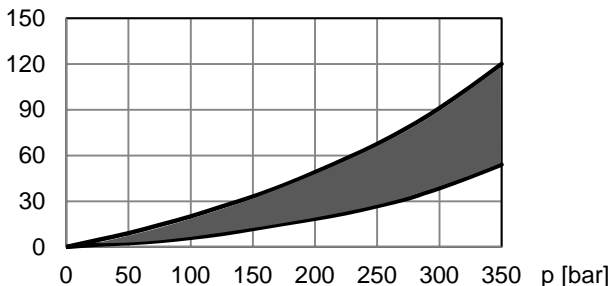
42W	-06	-...	-SOR	-...
-----	-----	------	------	------

omit = NBR-seals  
V = FKM-seals (Viton)  
emergency shut off and safety restart function  
function symbol according overview  
06 = mounting interface NG 6  
4/2 - way valve

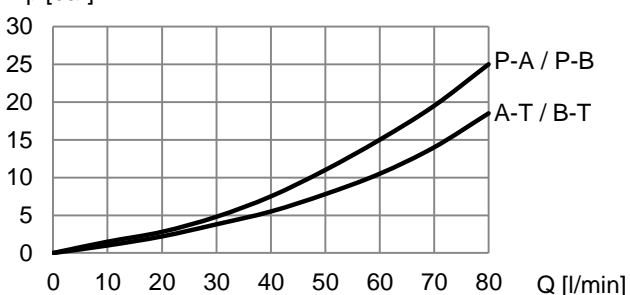
**Characteristics**

oil viscosity  $\nu = 30 \text{ mm}^2/\text{s}$

$Q_L = f(p)$  Leakage volume flow characteristics  
per control edge

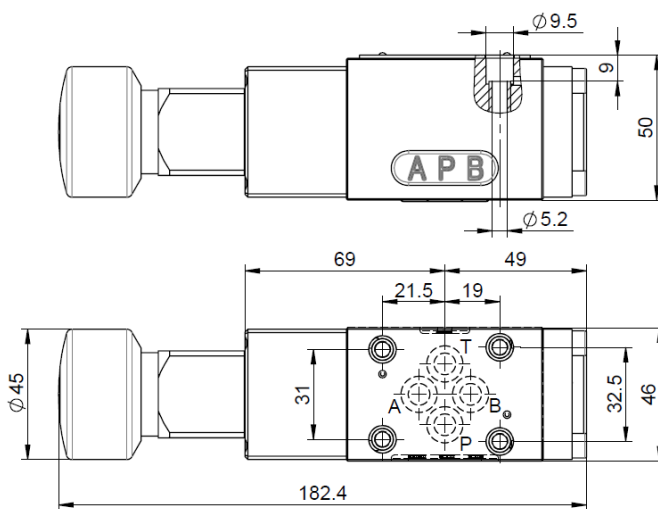


$\Delta p = f(Q)$  Pressure drop volume flow characteristics



**Dimensions**

42W-06-3AR-SOR



42W-06-3BR-SOR

