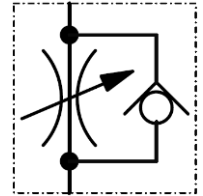


- Throttle check valve size 1 ... size 7
- Line mounting valve
- Steel body
- up to 400 bar, 210 l/min



Description

Series EFCS units are throttle check valves with threads from G 1/8" to G 1 1/4".

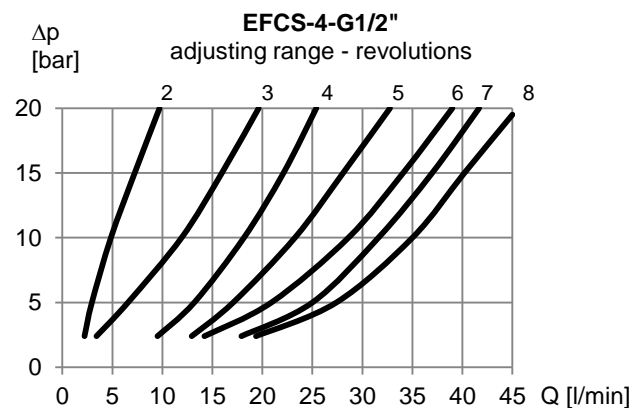
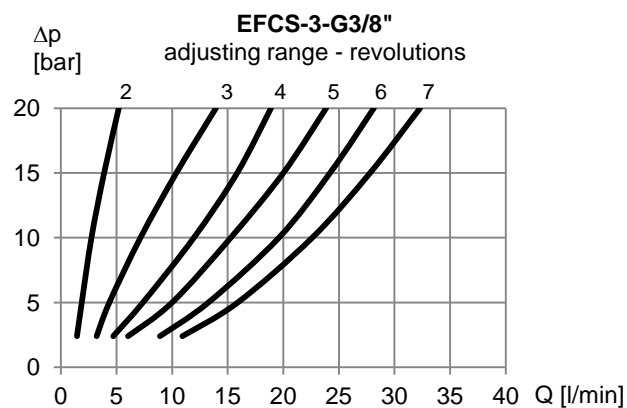
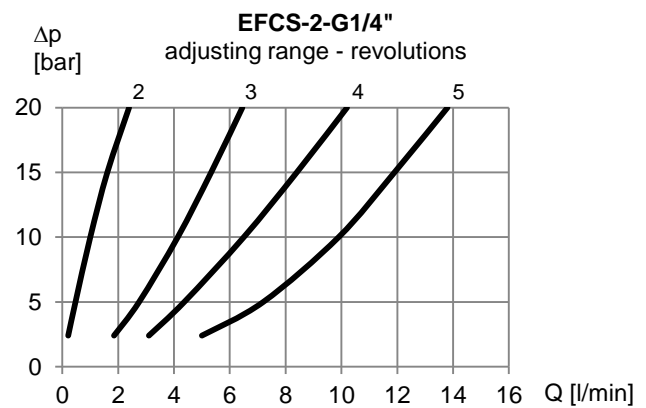
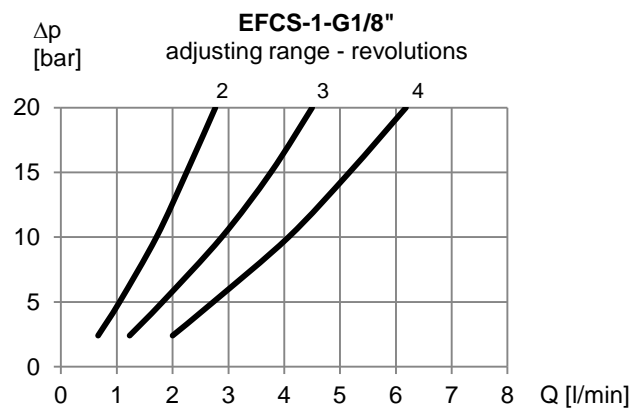
The throttling is made by an annular gap.

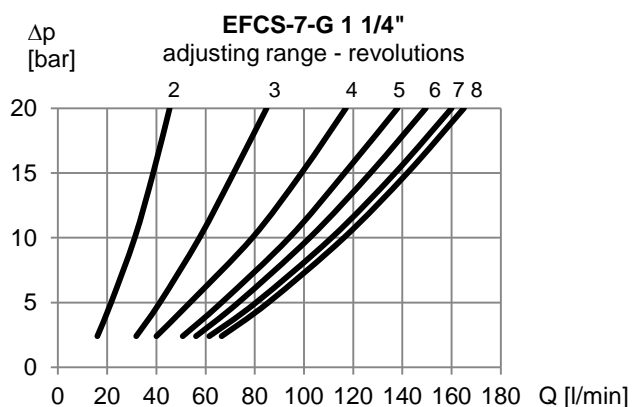
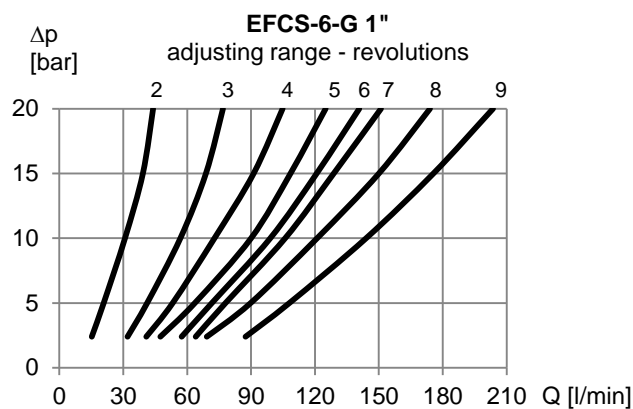
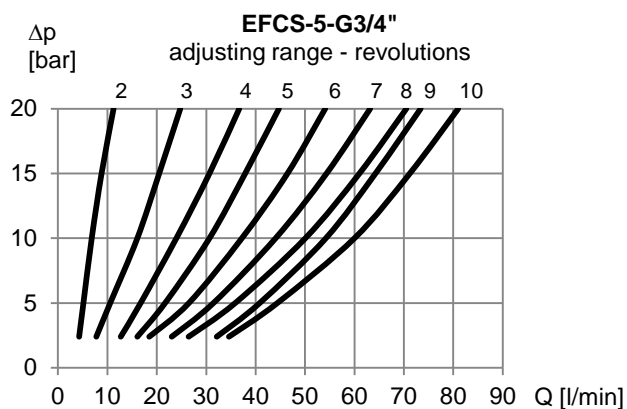
Technical Data

General Specifications	EFCS
Design:	annular gap
Mounting method:	pipe-mounting valve - or panel mounting (panel thickness max. 6mm)
Size:	G 1/8" ... G 1 1/4" (see table dimensions)
Mounting position:	any

Hydraulic Specifications	
Max. operating pressure range:	size 1 ... size 5 400 bar size 6 and size 7 320 bar
Max. volume flow:	210 l/min
Fluid:	mineral oils according DIN 51525
Temperature range:	-20°C ... + 90°C

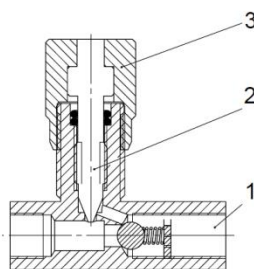
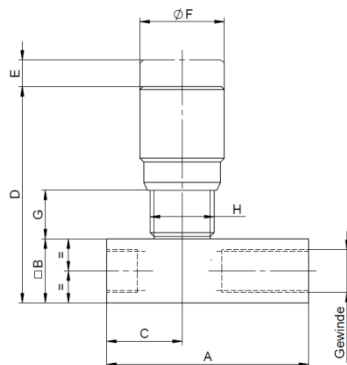
Characteristics





Pressure difference Δp at constant throttle position in relation to the volume flow Q
 Oil temperature $t_{oil} = 50^{\circ}C$
 Viscosity $\nu = 35 \text{ mm}^2/s$

Dimensions



Item	Qty.	Description	Material
1	1	valve body	steel blued
2	1	spindle	steel hardened
3	1	adjusting knob	aluminium

	Size	Thread	A	B	C	D	E	øF	G	H	Weight kg
EFCS-1	NW 6	G 1/8"	48,0	16	17,0	60,5	5	21,5	15	M17x1	0,13
EFCS-2	NW 8	G 1/4"	65,5	20	22,5	71,5	7	26,0	17	M20x1	0,25
EFCS-3	NW 10	G 3/8"	79,0	25	29,5	84,5	9	33,0	19	M25x1,5	0,50
EFCS-4	NW 12	G 1/2"	94,0	30	34,0	97,0	10	37,0	20	M30x1,5	0,75
EFCS-5	NW 16	G 3/4"	114,0	40	42,0	120,5	12	46,0	25	M40x1,5	1,60
EFCS-6	NW 20	G 1"	138,5	50	52,5	151,5	16	56,0	34	M50x1,5	3,10
EFCS-7	NW 25	G 1 1/4"	157,0	55	62,0	156,5	16	56,0	34	M50x1,5	3,75

Type code

EFCS	-...	-...	-...	-...								
					Option							
					omit	= steel body						
					NIRO	= stainless steel body (on request)						
					Sealing							
					omit	= NBR o-ring						
					V	= FKM o-ring (Viton)						
					E	= EPDM o-ring (on request)						
					Thread							
					G1/8"	G1/4"	G3/8"	G1/2"	G3/4"	G 1"	G 1 1/4"	
					Size							
					1	2	3	4	5	6	7	
					Throttle check valve adjustable							

Ordering example

- Throttle check valve adjustable
- Size 4
- Thread G1/2"
- Steel body

or

- Throttle check valve adjustable
- Size 2
- Thread G1/4"
- Sealing FKM
- Stainless steel body

Type description

EFCS-4-G1/2"

EFCS-2-G1/4"-V-NIRO

Application notes

The maximal operating pressure must not be exceeded and any pressure peaks must be taken into consideration.

Buyers bear the sole responsibility for ensuring that the selected products are suitable for their applications. Buyers normally establish this by undertaking qualification programs on test stands, or by evaluating the performance of prototype machines or systems.