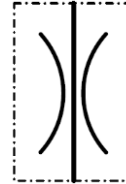


- common orifices
- orifices with included edge filters



Description

Orifices are also known as throttles. The throttle section is kept as short as possible to ensure the advantage of the typical orifice, viscosity independence. To avoid the risk of blocked orifice by dirt, use the type with included edge filters. There is a filter gap in

front of the orifices, with a gap about $\frac{1}{3}$ of the orifice diameter. The filter gap and the thereby greatly reduced flow velocity help a lot to reduce the risk of blocked orifices.

Technical Data

General Specifications	G
Design:	common orifice or orifice with included edge filter
Mounting method:	screw-in cartridge
Thread size:	M3 ... M8 (see table Dimensions)
Mounting position:	unrestricted
Accuracy:	±0.02mm (higher accuracy on request)

Hydraulic Specifications	
Max. pressure:	Brass: 300 bar, Steel 600 bar
Fluid:	hydraulic oils HL and HLP according DIN 51524
Temperature range:	-20°C ... + 90°C (NBR) -60°C ... +200°C (FKM)
Viscosity range:	10 ... 500 mm ² /s (cSt)
Min. fluid cleanliness	20/18/15 acc. to ISO 4406 / max. class 9 acc. to NAS 1638

Type code

G	SV	-M5	x	0.8	- ST
----------	-----------	------------	----------	------------	-------------

Material:

- ST** = steel
- MS** = brass

Orifice diameter:

øD in the chart

Thread size:

M3, M4, M5, M6, M7, M8 (other sizes on request)

- omit** = common orifice, without edge filter
- V** = edge filter in screw direction in front
- H** = edge filter in screw direction in back

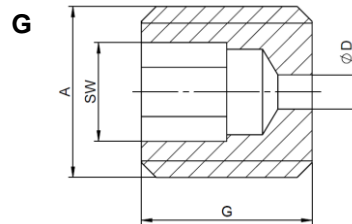
- G** = full thread
- B** = with shaft
- J** = with cylinder head

Dimensions

Common orifices

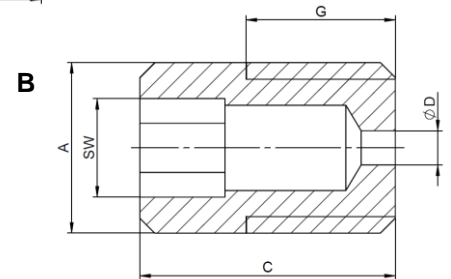
full thread G

A	G	øD	SW (AF)
M3	3.5	0.2 - 1.2	1.5
M4	4.0 (MS 4.5)	0.2 - 2.0	2.0
M5	5.0	0.2 - 2.2	2.5
M6	6.0	0.2 - 2.7	3.0
M7	7.0	0.2 - 2.7	3.0
M8	8.0	0.2 - 3.7	4.0



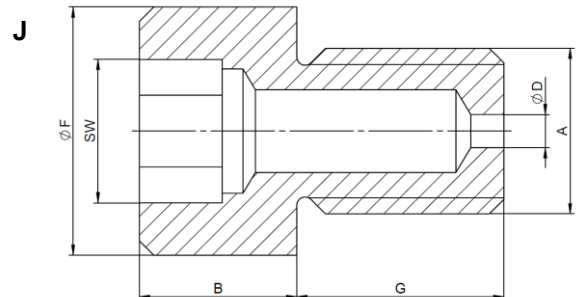
with shaft B

A	C	G	øD	SW (AF)
M3	6.0	3.5	0.2 - 1.2	1.5
M4	6.0 (MS 7.0)	3.5 (MS 4.0)	0.2 - 2.0	2.0 (MS 2.5)
M5	7.5 (MS 8.0)	4.0 (MS 5.0)	0.2 - 2.2	2.5
M6	8.0 (MS 9.0)	5.0 (MS 6.0)	0.2 - 2.7	3.0
M8	11.0	6.0	0.2 - 3.7	4.0



with cylinder head J

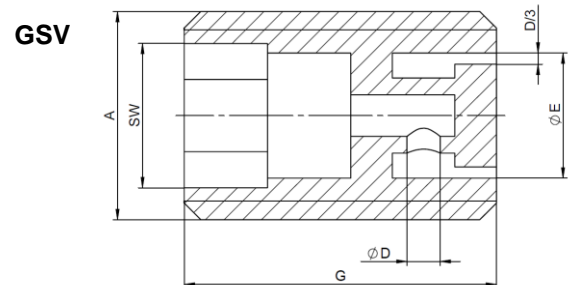
A	G	B	øF	øD	SW (AF)
M3	4.0	2.8	5.0	0.2 - 1.2	2.5
M4	5.0	3.8	6.0	0.2 - 2.0	3.0
M5	5.0	4.0	7.0	0.2 - 2.2	3.0
M6	6.0	5.7	9.0	0.2 - 2.7	5.0
M8	8.0	7.7	11.0	0.2 - 3.7	6.0



Orifice with included edge filter

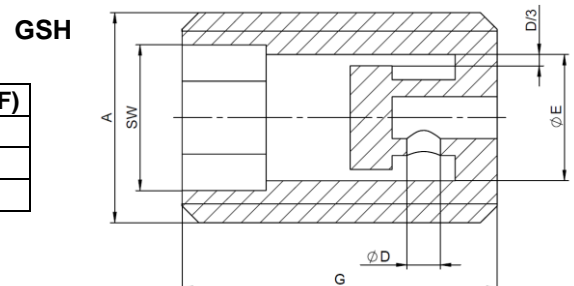
full thread GSV / GSH

A	G	øD	øE	SW (AF)
M5	7.5	0.2 - 0.8	3.0	3.0
M6	8.0	0.2 - 0.8	3.0	3.0
M8	11.0	0.2 - 1.0	5.0	4.0



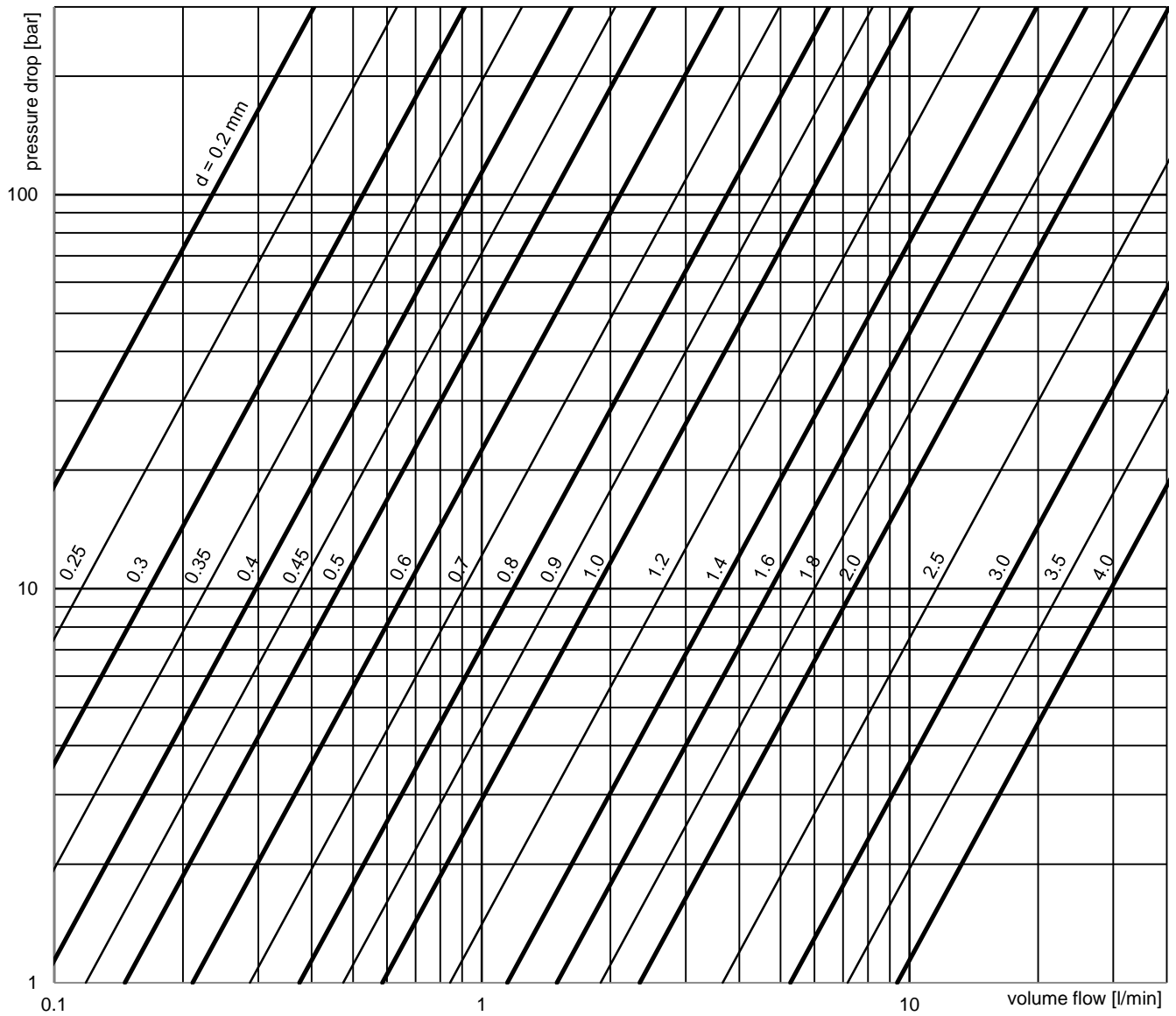
with shaft BSV / BSH

A	C	G	øD	øE	SW (AF)
M5	7.5	4.0	0.2 - 0.8	3.0	3.0
M6	8.0	5.0	0.2 - 0.8	3.0	3.0
M8	11.0	6.0	0.2 - 1.0	5.0	4.0



with cylinder head JSV / JSH

A	G	B	F	øD	øE	SW (AF)
M5	5.0	4.0	7.0	0.2 - 0.8	3.0	3.0
M6	6.0	5.7	9.0	0.2 - 0.8	3.0	5.0
M8	8.0	7.7	11.0	0.2 - 1.0	5.0	6.0



Flow coefficient appr. 0.5
Density 0.9 kg/dm³