

# MOBILE | LIGHT



NH21  
NH25



Lind Jensens Maskinfabrik A/S  
Kroghusvej 7, Højmark  
DK-6940 Lem St. • Denmark  
Home page: [www.ljm.dk](http://www.ljm.dk)



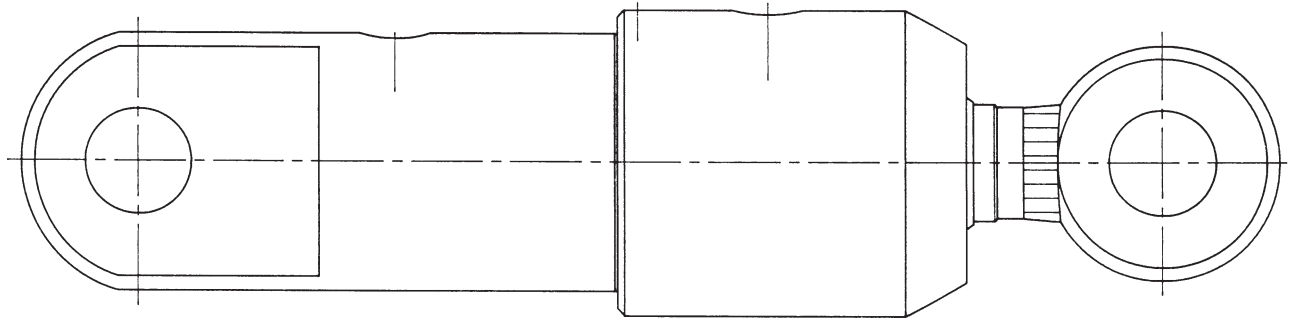


# Overblik / Übersicht / Design features

for NH 21 cylinder

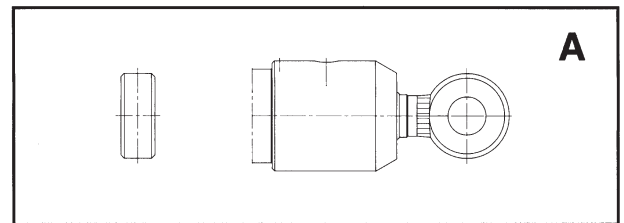
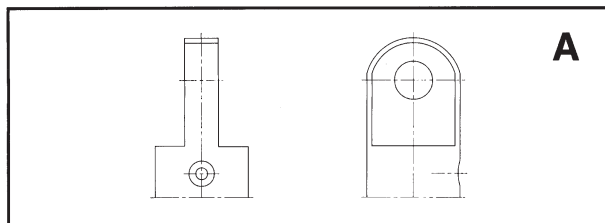
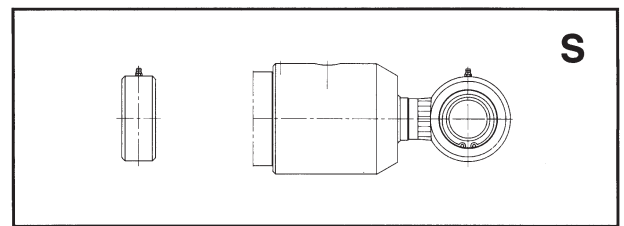
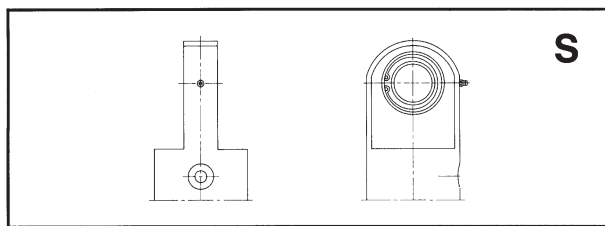
für NH 21 Zylinder

for NH 21 cylinder



\* Grundtyper/  
Zylinderbefestigung/  
Basic types

Stempelstangsophæng/  
Kolbenstangenbefestigung/  
Piston rod mounting



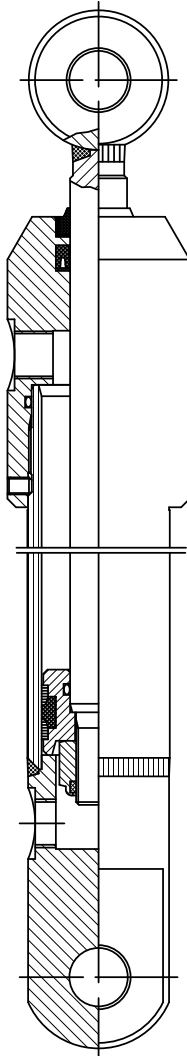
Lind Jensens Maskinfabrik A/S  
Kroghusvej 7, Højmark  
DK-6940 Lem St. • Denmark  
Home page: [www.ljm.dk](http://www.ljm.dk)





# Technical specifications

## NH21



### Piston rod:

Centreless ground steel, which is hard-chrome plated  
min. 20  $\mu\text{m}$ .  
Hardness min. 850 HV.  
Ra max. 0.3  $\mu\text{m}$ .  
External tolerance h9.

### Seals:

(Standard). See sealing guide

### Mounting:

A Fixed mounting.  
S Spherical bearing.

### Connections:

Cylindrical BSP thread, threaded length corresponding to standard fittings.

### Operation pressure:

Operation pressure: Max. 210 bar.

### Piston velocity:

Max. piston velocity: 0,3 m/s.

### Operating temperature:

Temperature range:  $-20^{\circ}\text{C}$  to  $+80^{\circ}\text{C}$ .

### Pressure medium:

Hydraulic oil on a mineral oil base.

### Test:

The cylinders are tested according to spot test.

### Order code:

See specification form 3.

### General:

NH 21 is a double acting hydraulic cylinder for light mobile applications and similar purposes.  
Bore from  $\varnothing 40$  -  $\varnothing 100$  mm.

### Construction:

(See sketch).

### Zylinderrohr:

Steel tube (SIS 2172)  
Honed to Ra max. 0,3  $\mu\text{m}$ .  
Internal tolerance H9.



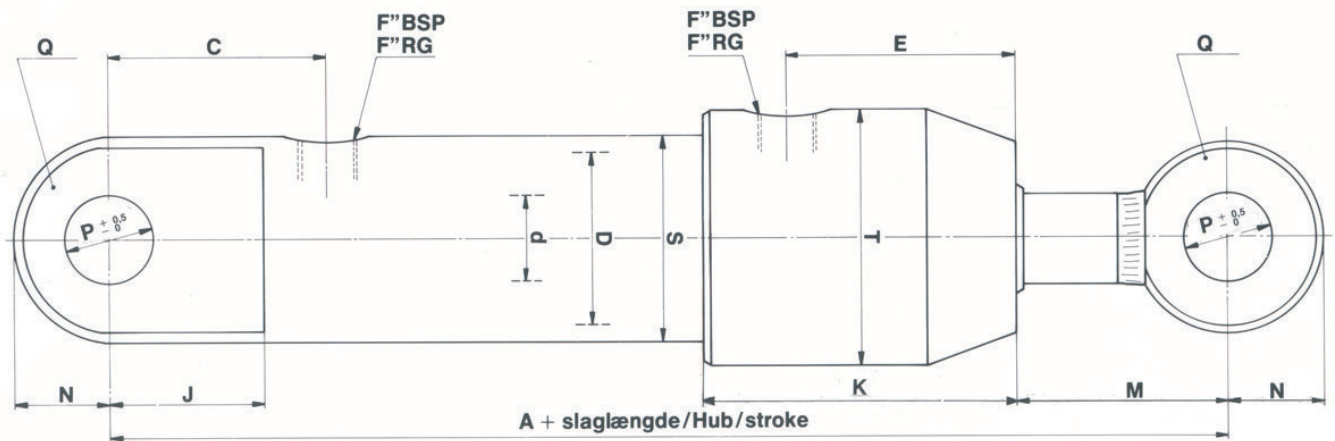
Lind Jensens Maskinfabrik A/S  
Kroghusvej 7, Højmark  
DK-6940 Lem St. • Denmark  
Home page: [www.ljm.dk](http://www.ljm.dk)





# Målskitse/Maßblatt/Dimension sketch

## NH21-A



Lind Jensens Maskinfabrik A/S  
Kroghusvej 7, Højmark  
DK-6940 Lem St. • Denmark  
Home page: [www.ljm.dk](http://www.ljm.dk)



Hydraulik  



# Målskema/Maßtabelle/Dimension table

## NH21-A

D/d	A	N	M	E	S	T	P	J	Q	F	C	K	Lmin.
40/20	215	25	48	48,5	50	64	20,5	38	20	3/8"	54	102	10
40/25	215	25	48	48,5	50	64	20,5	38	20	3/8"	54	102	10
50/25	252	27,5	67	54,5	60	78	25,5	45	25	3/8"	67	109	15
50/35	252	27,5	67	54,5	60	78	25,5	45	25	3/8"	67	109	15
63/30	282	30	77	61	73	88	30,5	51	30	1/2"	75	121	15
63/40	282	30	77	61	73	88	30,5	51	30	1/2"	75	121	15
80/40	312	40	87	71	90	107	35,5	61	40	1/2"	85	130	15
80/50	312	40	87	71	90	107	35,5	61	40	1/2"	85	130	15
100/50	352	50	83	83	110	130	45,5	77	50	1/2"	109	147	20
100/65	352	50	83	83	110	130	45,5	77	50	1/2"	109	147	20

Alle angivne mål er i (mm). Ret til ændringer forbeholdes.

Alle angegebenen Maße sind in (mm). Wir behalten uns das Recht auf Änderungen vor.

Unless otherwise specified, all dimensions are in (mm). Right to alterations reserved.

Lmin. = Min. slaglængde/Mindesthub/Min. stroke.



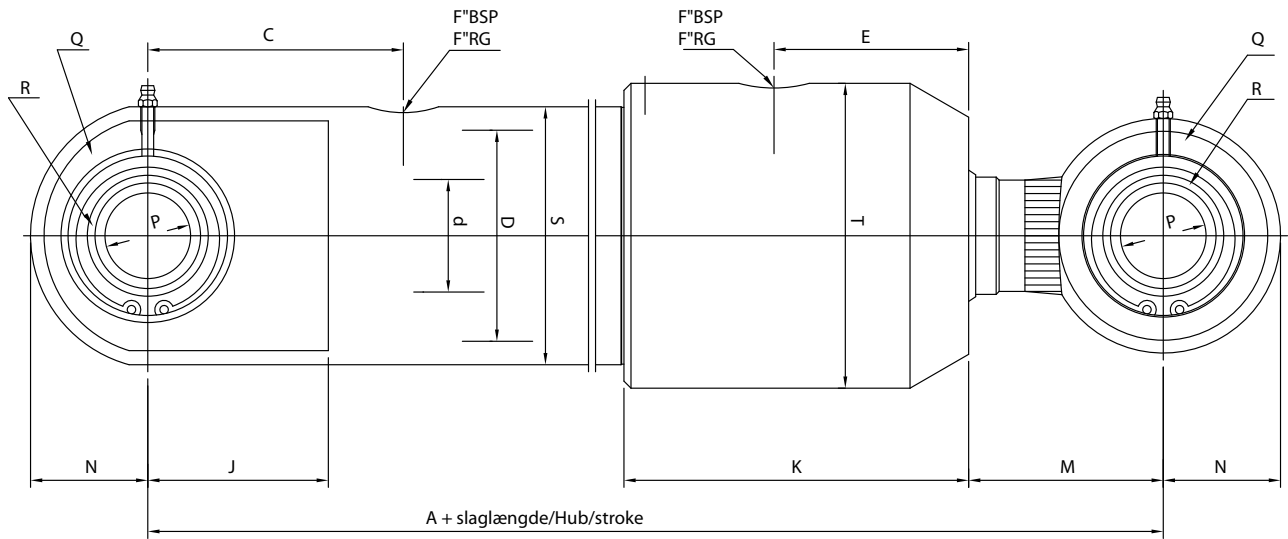
Lind Jensens Maskinfabrik A/S  
Kroghusvej 7, Højmark  
DK-6940 Lem St. • Denmark  
Home page: [www.ljm.dk](http://www.ljm.dk)





# Målskitse/Maßblatt/Dimension sketch

## NH21-S



Lind Jensens Maskinfabrik A/S  
Kroghusvej 7, Højmark  
DK-6940 Lem St. • Denmark  
Home page: [www.ljm.dk](http://www.ljm.dk)





# Målskema/Maßtabelle/Dimension table

## NH21-S

D/d	A	N	M	E	S	T	P	J	Q	F	C	R	K	Lmin.
40/20	215	25	48	48,5	50	64	20	38	20	3/8"	54	16	102	10
40/25	215	25	48	48,5	50	64	20	38	20	3/8"	54	16	102	10
50/25	252	30	67	54,5	60	78	25	45	25	3/8"	67	20	109	15
50/35	252	30	67	54,5	60	78	25	45	25	3/8"	67	20	109	15
63/30	282	35	77	61	73	88	30	51	30	1/2"	75	22	121	15
63/40	282	35	77	61	73	88	30	51	30	1/2"	75	22	121	15
80/40	312	40	87	71	90	107	35	61	40	1/2"	85	25	130	15
80/50	312	40	87	71	90	107	35	61	40	1/2"	85	25	130	15
100/50	352	50	83	83	110	130	45	77	50	1/2"	109	32	147	20
100/65	352	50	83	83	110	130	45	77	50	1/2"	109	32	147	20

Alle angivne mål er i (mm). Ret til ændringer forbeholdes.

Alle angegebenen Maße sind in (mm). Wir behalten uns das Recht auf Änderungen vor.

Unless otherwise specified, all dimensions are in (mm). Right to alterations reserved.

L min. = min. slaglængde/mindesthub/min. stroke



Lind Jensens Maskinfabrik A/S  
Kroghusvej 7, Højmark  
DK-6940 Lem St. • Denmark  
Home page: [www.ljm.dk](http://www.ljm.dk)





# Specification form 3

## Order code NH21

### NH21-X-X-D/d x L-X-X

<b>Model:</b> _____	_____	_____	_____	_____	_____	_____	_____
<b>Basic types:</b> Blank: No mounting S: Spherical bearing A: Fixed mounting	_____	_____	_____	_____	_____	_____	_____
<b>Function:</b> D: Double acting E1: Single acting, compressive E2: Single acting, tractive	_____	_____	_____	_____	_____	_____	_____
<b>Bore:</b> _____	_____	_____	_____	_____	_____	_____	_____
<b>Piston rod diameter:</b> _____	_____	_____	_____	_____	_____	_____	_____
<b>Stroke:</b> _____	_____	_____	_____	_____	_____	_____	_____
Digit: Length of spaver bush Digit: in() = pistonrod extension	_____	_____	_____	_____	_____	_____	_____
							<b>Piston rod mounting:</b> A: Fixed mounting S: Spherical bearing



Lind Jensens Maskinfabrik A/S  
 Kroghusvej 7, Højmark  
 DK-6940 Lem St. • Denmark  
 Home page: [www.ljm.dk](http://www.ljm.dk)







D/d \ L	50	100	150	200	250	300	350	400	500	600	700	800
40/20	•	•	•	•								
40/25				•	•	•	•	•				
50/25		•	•	•	•	•	•	•	•			
50/35								•	•	•	•	
63/30		•	•	•	•	•	•	•	•	•		
63/40								•	•	•	•	•
80/40				•	•	•		•	•		•	
80/50							•	•	•	•	•	•



## Innovative solutions tailored to your requirements:

- Hydraulics, power units and valves
- Pressure test units, high pressure hydraulics
- Production aids, machines

## A wide range of excellent products:

- Proportional valves, emergency shut off valves, as well for hazardous areas
- Test couplings, check valves, pressure gauges
- Miniature-air/oil-coolers

## Hydraulic components from well-known manufacturers,

- chosen by our high demands
- on quality and delivery reliability!

## Repairs and maintenance

- on hydraulic parts and systems
- carried out by our specialists.

Your partner for  
hydraulics and engineering

---