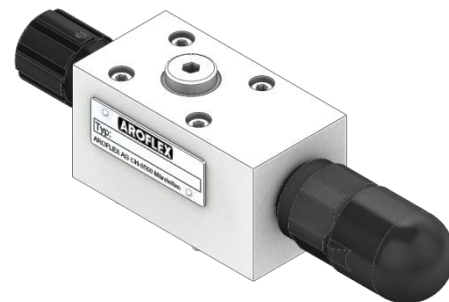


- NG 6 interface
- several pressure ranges
- $Q_{\max} = 30 \text{ l/min}$
- type-tested available



## Description

The safety valve unit HSB-06 is used to the prescribed protection and discharge of hydraulic systems with accumulators. The connection interface of the device is according to DIN 24340 A 06. This allows installation without additional piping in multi-station systems. In association with intermediate plate devices many combinations are possible. The internal connection between terminals P, A and B provide connections for additional units e.g.: accumulator, test port etc.

The safety valve unit is equipped with a direct acting pressure relief cartridge in seat-type design (optional type-tested), drain valve and test coupling. A suitable pressure gauge is available for directly screwing.

## Technical Data

<b>General specifications</b>	
Operating pressure:	up to 420 bar
Volume flow:	up to 30 l/min
Viscosity range:	2,8 – 380 mm <sup>2</sup> /s (cSt)
Fluid:	Mineral oil, other fluids on request
Fluid temperature:	- 20° ... + 70°C
Nominal size:	NG6, DIN 24340 A 06, ISO 4401-03, Cetop 3
Weight:	1,9 kg

## Type code

HSB	-06	-MV	-315	-V	-TÜV/200
-----	-----	-----	------	----	----------

**omit** = standard  
**TÜV/XXX** = Safety valve type-tested according to 97/23/EC / factory-set pressure

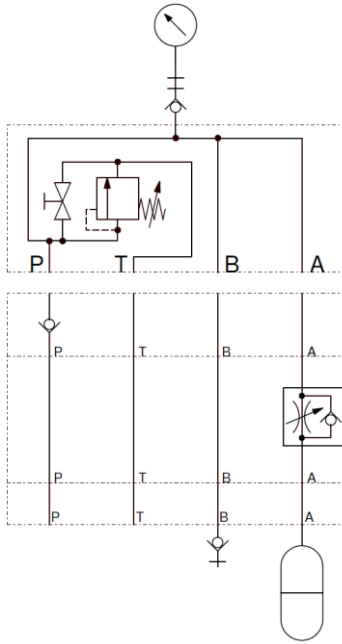
**sealing material:**  
**omit** = NBR  
**V** = Viton

**pressure range:** (not for TÜV-type)  
**25** = up to 25 bar      **200** = up to 200 bar  
**50** = up to 50 bar      **315** = up to 315 bar  
**100** = up to 100 bar      **400** = up to 400 bar

**omit** = without test coupling  
**MV** = test coupling  
**MW** = pressure gauge horizontal  
**MS** = pressure gauge vertical  
**06** = NG 6

**safety valve unit**

**Schematic**



pressure gauge

test coupling

safety valve unit HSB-06

*execution proposal:*

*check valve, sandwich construction if B = consumer port*

*restrictor valve with reverse free flow check, sandwich construction, or stop valve*

*multi-station plate with interface acc. to DIN 24340 A 06*

*A = accumulator port*

*B = consumer or measuring port*

**Dimensions**

\* = HSB-06-...

\*\* = HSB-06-MV-...

\*\*\* = HSB-06-MW-...

\*\*\*\* = HSB-06-MS-...

