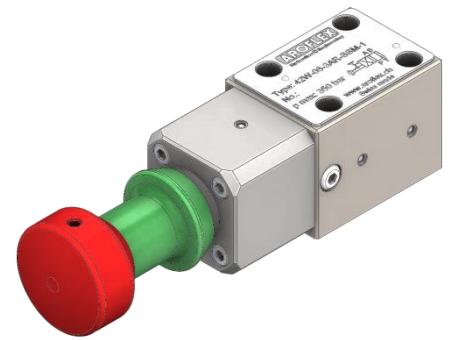


- **manually operated**
- **p_{max} on P, A and B = 350 bar**
- **p_{max} on T = 150 bar**
- **Q = 12 l/min**



Description

The manually operated 4/2 way valve is often used as a 3/2- way pilot valve to shut off bigger valves.

The spool of the valve is held in normal position by spring-loaded balls.

In the actuated position is the valve locked. In order to reset the valve, the green sleeve must be pushed towards the valve body while simultaneously pulling the red push-knob back to its rest position.

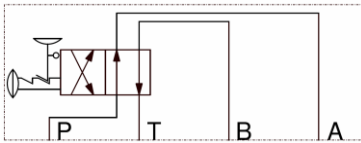
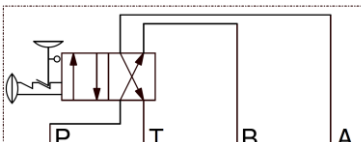
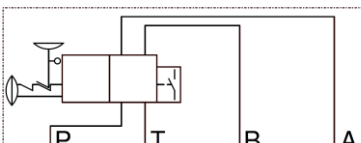
The valve is protected for use in seawater atmosphere. Thereby it is an all-purpose valve.

Technical Data

General Specifications	42W-06-...-SSM-...-1
Description:	4/2 way spool valve, manually operated
Actuator:	Push-button, relief sleeve
Mounting position:	any
Ambient temperature:	- 20° ... + 50°C
Nominal size:	NG6, DIN 24340 A 06, ISO 4401-03, Cetop 3
Weight:	1.72 kg

Hydraulic Specifications	
Nominal flowrate:	Q = 12 l/min
Max. pressure on P, A and B:	p _{max} = 350 bar
Max. pressure on T:	p _{max} = 150 bar
Fluid:	Mineral oil, other fluids on request
Fluid temperature:	- 20° ... + 70° C
Viscosity range:	12 - 320 mm ² /s (cSt)
Filtration:	25 µm minimum
Internal leakage:	see characteristics

Overview

Symbols	Description	Design
	42W-06-3AR-SSM-1	4/2 - way valve, detent normal position: P – A, B – T actuated position: P – B, A – T
	42W-06-3BR-SSM-1	4/2 - way valve, detent normal position: P – B, A – T actuated position: P – A, B – T
	42W-06-...-SSM-E-1	4/2 - way valve, detent with inductive switch position sensor, N.O., PNP

Type code

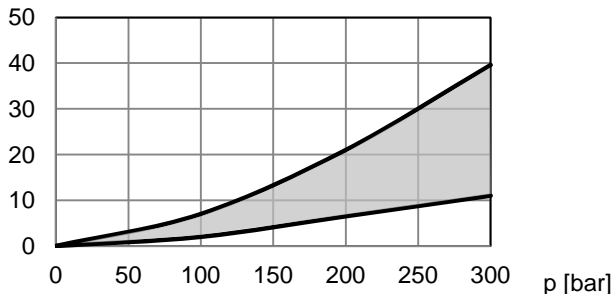
42W	-06	-...	-SSM	-...	-1	-...
omit = NBR-seals V = Viton-seals						
design status omit = standard E = with inductive sensor, N.O., PNP						
emergency shut off device function symbol according overview 06 = mounting interface NG 6 4/2 - way valve						

Characteristics

Measured with ISO46 mineral oil at 40°C

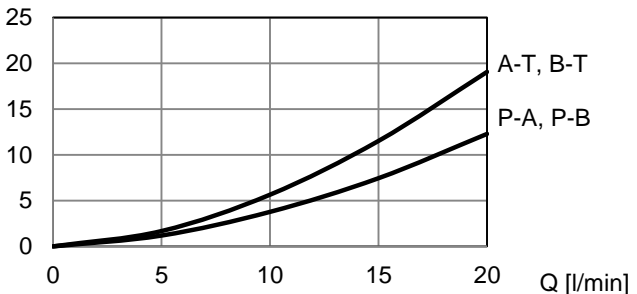
$Q_L = f(p)$ Leakage

Q_L [cm³/min]



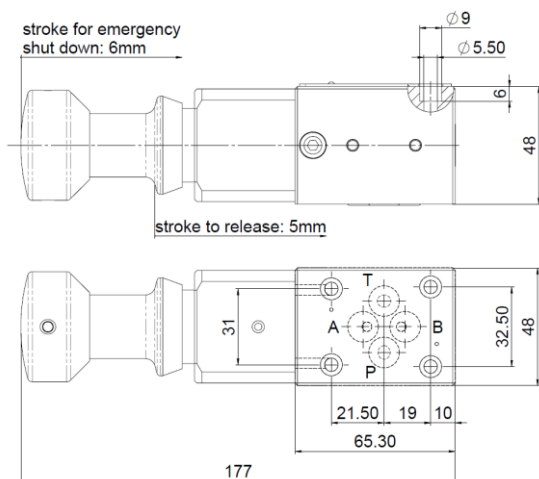
$p = f(Q)$ Pressure drop

p [bar]



Dimensions

42W-06-...-SSM-1



42W-06-...-SSM-E-1

