

Description

Pilot operated proportional inverse pressure reducing valves NG6. Flange construction according to ISO 4401-03 with 4 ports. Incorporated are proportional pressure reducing cartridges size M22x1,5 according to ISO 7789. The steel bodies for flange constructions are painted with a two component painting.

By adjusting the electric current to the proportional solenoid the pressure in the controlled port will be changed inversely proportionally to the solenoid current. The maximum reducing pressure is set by a spring force, which can be adjusted. With increasing solenoid current, the reduced pressure declines. A pressure rise in the controlled port above the adjusted value, caused e.g. by an active oil consumer, will be prevented by relieving excessive flow to the tank line T.

The valves have their use in hydraulic applications in which reduced pressure must not fall to zero in case of control current failure.

Technical Data

General Specifications	PDRVA-6-350-INV-SD-EEx emII T4
Description:	Proportional pressure reducing valve, inverse, pilot operated
Nominal size:	NG6 to ISO 4401-03
Actuator:	Proportional solenoid
Mounting position:	any, preferably horizontal
Ambient temperature:	- 20 ... + 40° C
Weight:	3.9 kg

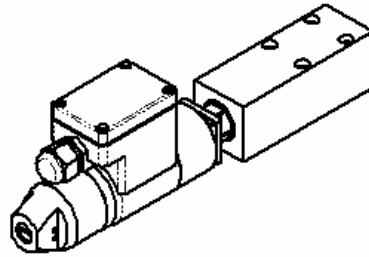
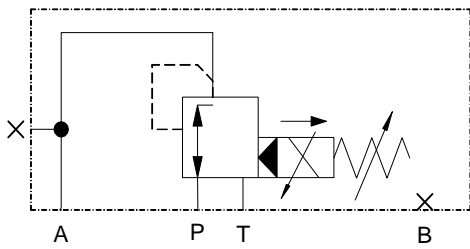
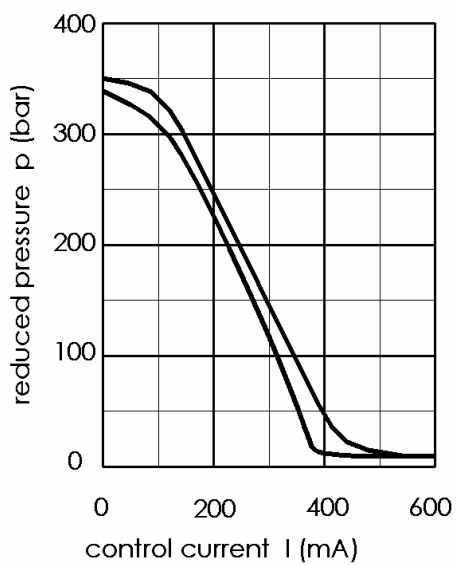
Electrical Specifications	
Nominal voltage:	24 VDC EEx em II T4
Current range:	0 - 0.61 A
Rated resistance R ₂₀ :	32 Ω
Power rating:	17 W
Relative duty factor:	100%
Protection class:	IP67 to DIN 40050
Connection:	terminal box

Safety, Start up: The solenoid coils must only be mounted on those valves assigned to. In the power supply for each solenoid a fuse of an appropriate rating (max. 3 times I_B of solenoid, DIN 41571 or IEC 127) respectively a circuit breaker with electromagnetic and thermal interruption must be installed.

Hydraulic Specifications	
Volume flow range:	Q _{max} = 0 – 60 l/min
Max. pressure:	p _{max} = 400 bar
Fluid:	Mineral oil or other fluids on request
Viscosity range:	12-320 mm ² /s (cSt)
Filtration:	25 μm minimum, recommended: 10μm or better
Fluid temperature:	- 20 ... + 40° C
Repeatability:	≤ 2 % at optimal dither signal
Hysteresis:	≤ 4 % at optimal dither signal

Type Code

PDRVA	06	-350	-INV	-SD	-EEx emII T4	
						standard voltage 24 VDC, explosion proof execution
						flange body P/A
						inverse function
						standard nominal pressure range p = 350 bar
						mounting interface NG 6
						proportional pressure reducing valve, pilot operated

Symbol**Diagram****Dimensions**