

CLF - Low profile push cylinders with spring return

CLF cylinders are the right choice for those who need flexible cylinders with small installation dimensions. With capacities ranging from 5 ton to 200 ton, there are lifting forces for all jobs. Threaded fastening hole makes it easy to integrate them in different applications.

Within the CLF series there is NIKE's smallest cylinder: CLF50-10. This cylinder is only 37 mm tall but has a amazing lifting capacity at 5 t. Because of their rather heigh weight, cylinders CLF670-45 and CLF1100-40 are equipped with a carrying handle, which can be taken off when needed.



Options for quick couplings

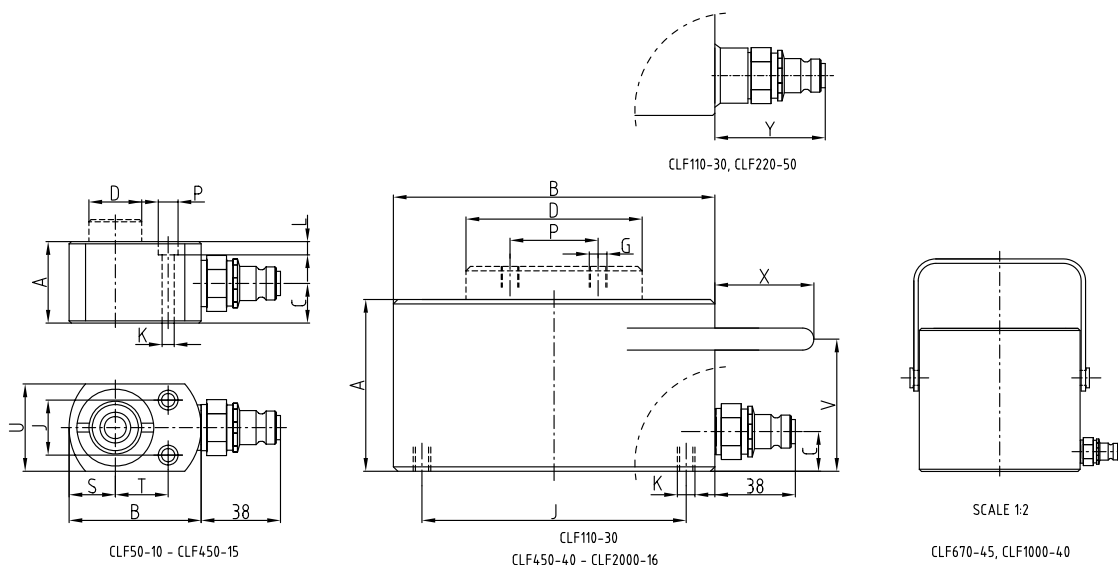
All cylinders can be delivered with quick copuplings of insert type - male ⁽¹⁾ or of screw model - female ⁽²⁾. When ordering cylinders with screw type coupling, put "P" at the end of the model (e.g. CFC1010P).





Technical data

Name	Working press. MPa	Capacity kN (t)	Stroke mm	Stroke volume cm ³	Piston ø mm	Piston area cm ²	Diameter mm	Height mm	Weight kg
CLF50-10	70	50 (5)	10	7.1	24	7.1	60	37	0.6
CLF110-10	70	111 (11)	10	15.9	35	15.9	80	43	1.5
CLF110-30	70	111 (11)	28	44.5	35	15.9	65	75	1.8
CLF220-13	70	218 (22)	13.5	42.1	50	31.2	100	50	2.6
CLF220-50	70	218 (22)	50	156	50	31.2	85	107	3.9
CLF450-15	70	445 (45)	15	95.4	60	63.6	134	68	6.4
CLF450-40	70	445 (45)	40	254.4	60	63.6	120	120	8.8
CLF670-15	70	665 (68)	15	142.5	80	95	146	78	9.2
CLF670-45	70	665 (68)	45	427.5	80	95	146	130	14.3
CLF1100-15	70	1078 (110)	15	231	100	154	180	90	17
CLF1100-40	70	1078 (110)	40	616	100	154	180	140	23.7
CLF1500-15	70	1498 (153)	15	321	125	214	220	100	28
CLF2000-16	70	1985 (202)	16	454	140	284	250	110	40



Name	Capacity kN (t)	A mm	B ø mm	C mm	D ø mm	G	J mm	K	L mm	P ø mm	S mm	T mm	U mm	V mm	X mm	Y mm
CLF50-10	50 (5)	37	60	18	24	-	25	ø 5.5 mm	6	10	20	25	40	-	-	-
CLF110-10	111 (11)	43	80	18	35	-	40	ø 5.5 mm	6	10	33	32	66	-	-	-
CLF110-30	111 (11)	75	65	20	35	-	40	M6	-	-	-	-	-	-	-	51
CLF220-13	218 (22)	50	100	20	50	-	40	ø 5.5 mm	6	10	44	41	86	-	-	-
CLF220-50	218 (22)	107	85	20	50	-	55	M6	-	-	-	-	-	-	-	51
CLF450-15	445 (45)	68	134	20	60	-	67	ø 12 mm	11	18	60	50	120	-	-	-
CLF450-40	445 (45)	120	120	20	60	-	75	M8	-	-	-	-	-	-	-	-
CLF670-15	665 (68)	78	146	20	80	-	110	M8	-	-	-	-	-	60	45	-
CLF670-45	665 (68)	130	146	20	80	-	95	M10	-	-	-	-	-	85	63	-
CLF1100-15	1078 (110)	90	180	20	100	-	120	M8	-	-	-	-	-	60	53	-
CLF1100-40	1078 (110)	140	180	25	100	-	120	M12	-	-	-	-	-	95	63	-
CLF1500-15	1498 (153)	100	220	27	125	M8	150	M10	-	70	-	-	-	80	58	-
CLF2000-16	1985 (202)	110	250	30	140	M8	200	M10	-	70	-	-	-	80	61	-



www.nikehydraulics.com

NIKE HYDRAULICS AB
 Box 1107
 631 80 Eskilstuna
 SWEDEN
 Tel +46 16 - 16 82 00
 Fax +46 16 - 13 93 16
 info@nikehydraulics.se

NIKE HYDRAULICS Inc.
 3980 W. Albany, Unit #1
 MCHENRY, IL 60050
 USA
 Tel + 1 815 385 7777
 Fax + 1 815 385 7776
 info@nikehydraulics.com

NIKE POWER EQUIPMENT Ltd.
 Unit 6, Stechford Trading Estate
 Lyndon Road, Stechford
 BIRMINGHAM B33 8BU, UK
 Tel +44 121 789 77 07
 Fax +44 121 789 68 66
 info@nikehydraulics.co.uk